

ACO Combipoint

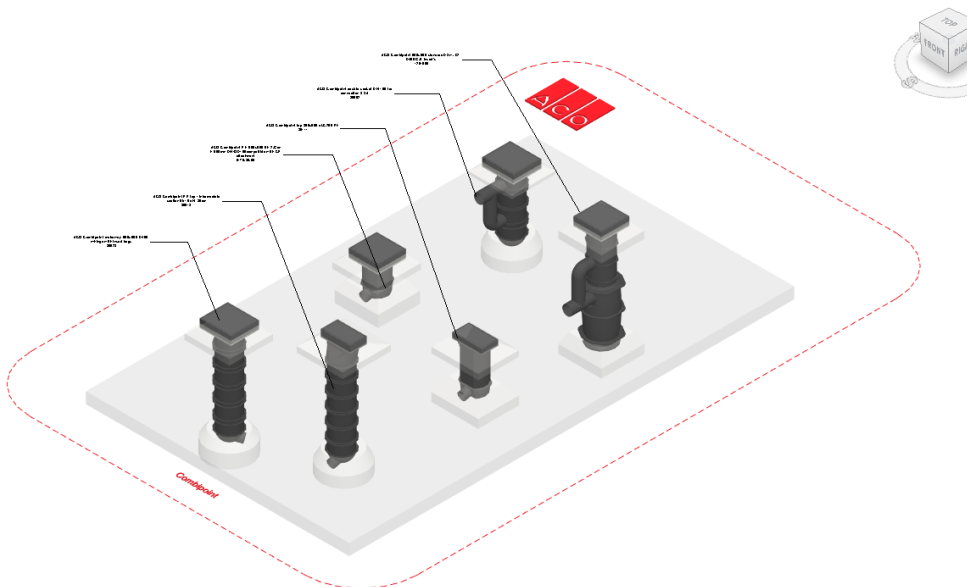
User Guide for Autodesk Revit files

ACO Combipoint Packages

All ACO Combipoint are incorporated in a single Revit template along with all accessories.

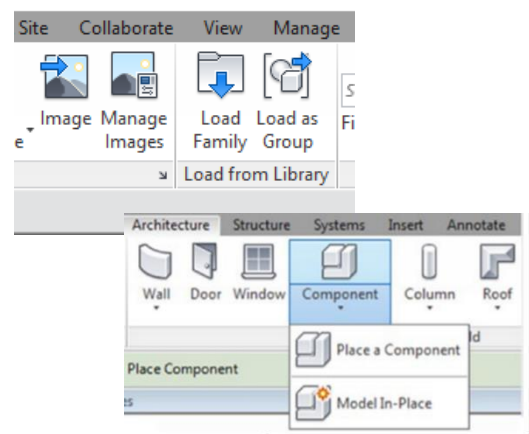
This template includes the following families:

1. Combipoint PP
2. Combipoint PE
3. Combipoint SSA



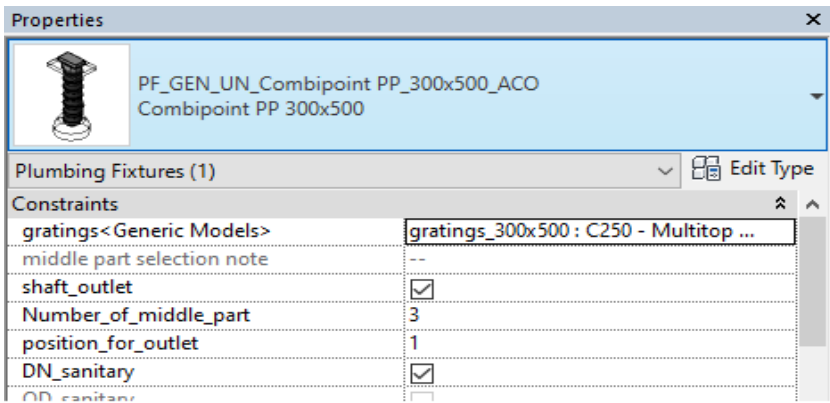
Loading ACO Combipoint PP into the project:

1. Download the ACO Combipoint PP project file and save it to a suitable location
2. Select any one of the family from ACO Combipoint PP, Load to your project
3. Navigate to the “Insert” icon on the Revit ribbon and click “Load Family”
4. The file can now be placed into your project. Navigate to the “Architecture/Component” icons on the Revit ribbon and click “Place a Component”

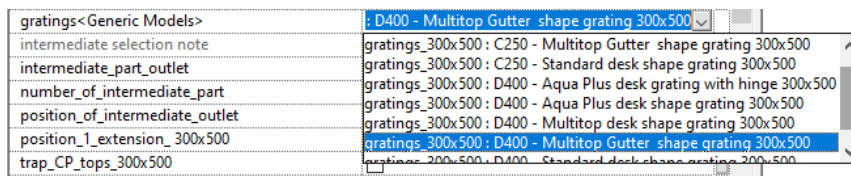


Placing of families

1. Click on the model – At properties tool bar, it will display family name and types.



2. **Selection of Gratings:** After loading into the project, then the user has to select the appropriate gratings from drop down list.



3. **Selection of Intermediate/Top part:** The user has to enter number_of_intermediate_part, maximum up to 5. By default, the outlet will be visible at bottom part, when the user check the intermediate_part_outlet, the position of outlet can be controlled by entering value in the position_of_intermediate_outlet, value ranges from 1-5.

If the position_of_intermediate_outlet is greater than the number_of_intermediate_part, then the outlet will be visible at value specified in the number_of_intermediate_part by default.

Note: If the value exceeds 5 in both number_of_intermediate_part and position_of_intermediate_outlet, then warning will appear.

Constraints	
gratings<Generic Models> (default)	gratings_300x500 : C250 - Multitop de
intermediate selection note (default)	--
intermediate_part_outlet (default)	<input type="checkbox"/>
number_of_intermediate_part (default)	1
position_of_intermediate_outlet (default)	5

4. **Rotational control for Outlet:** The user can control the outlet of the bottom part/intermediate part by specifying the value from 0° to 360°.

rotation_angle (default)	0.000°
--------------------------	--------

5. **Slope angle control for Top part:** The user can control slope angle for top part and the grating surface by entering value range from 0° to 8° and slope direction can be either clockwise or anticlockwise by checking the condition.

Note: If the value exceeds 8°, then warning will appear.

slope angle note (default)	--
slope_angle (default)	0.000°
slope_angle_clockwise_check (default)	<input type="checkbox"/>
slope_angle_anticlockwise_check (default)	<input checked="" type="checkbox"/>

- Height adjustment at Top part:** The user can adjust the height of top part by entering value range from 1 to 30mm in the height_adjustment. If the user want to increase the height then height_adjustment_maximum should be checked and vice-versa.

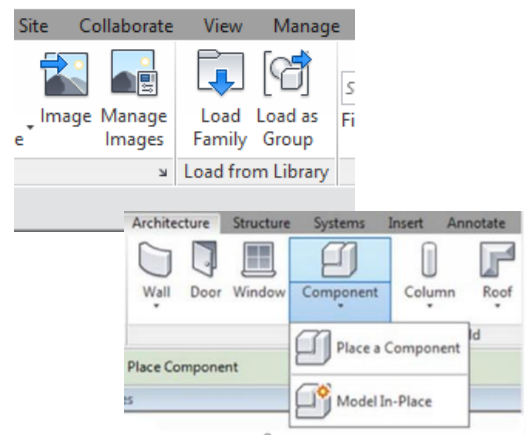
height adjustment note	--
height_adjustment	0.0
height_adjustment_maximum	<input checked="" type="checkbox"/>
height_adjustment_minimum	<input type="checkbox"/>

- Selection of accessories:** Finally, the user has to select accessories such as extension element 300x500, odor trap 300x500, renovation adapter. Also can select the OD and DN options for the out let pipes.

DN_sanitary (default)	<input checked="" type="checkbox"/>
OD_sanitary (default)	<input type="checkbox"/>
position_1_extension_300x500 (default)	<input type="checkbox"/>
trap CP tops_300x500 (default)	<input checked="" type="checkbox"/>
street drain renovation adapter (default)	<input type="checkbox"/>

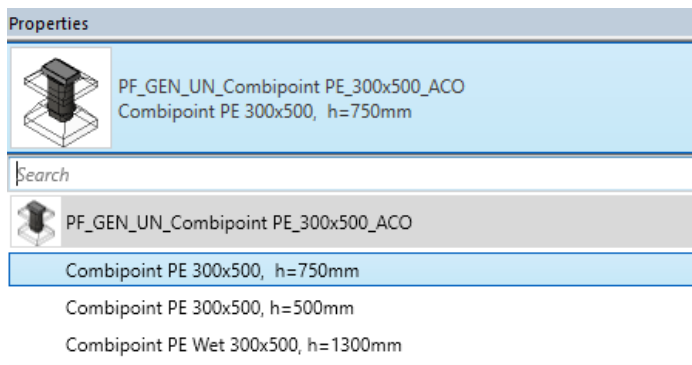
Loading ACO Combipoint PE into the project:

- Download the ACO Combipoint PE project file and save it to a suitable location
- Select any one of the family from ACO Combipoint PE, Load to your project
- Navigate to the “Insert” icon on the Revit ribbon and click “Load Family”
- The file can now be placed into your project. Navigate to the “Architecture/Component” icons on the Revit ribbon and click “Place a Component”

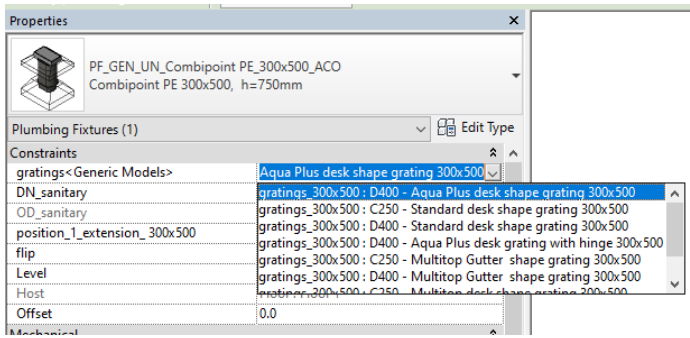


Placing of families

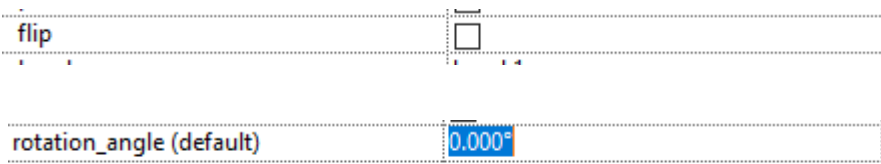
- Click on the model – At properties tool bar, it will display family name and types, then user can select types with respect to height.



2. **Selection of Gratings:** After loading into the project, then the user has to select the appropriate gratings from drop down list.



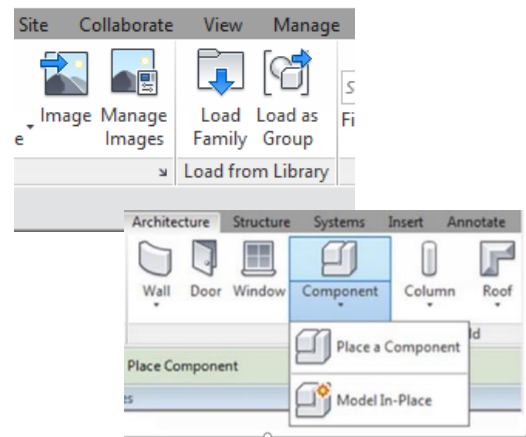
3. **Rotational control for Outlet:** The user can flip the outlet towards opposite direction (180°) of the compatible 300x500 with CP attachment by checking flip condition. In the case of PE compatible 500x500 with CP attachment, the user can control the outlet by specifying the value from 0° to 360°.



4. **Selection of accessories:** Finally, the user has to select accessories such as extension element 300x500. Also can select the OD and DN options for the out let pipes.

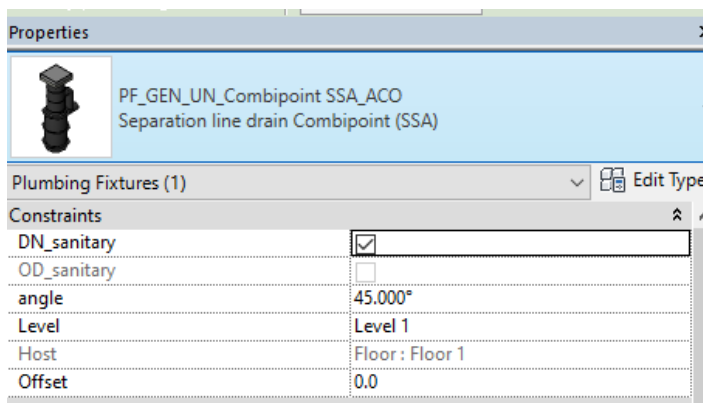
Loading ACO Combipoint SSA into the project:

1. Download the ACO Combipoint SSA project file and save it to a suitable location
2. Select any one of the family from ACO Combipoint SSA, Load to your project
3. Navigate to the “Insert” icon on the Revit ribbon and click “Load Family”
4. The file can now be placed into your project. Navigate to the “Architecture/Component” icons on the Revit ribbon and click “Place a Component”



Placing of families

1. Click on the model – At properties tool bar, it will display family name.



2. **Rotational control for Outlet:** The user can control the outlet of the Combipoint SSA by specifying the value from 0° to 360°.

rotation_angle (default)


3. **Selection of OD and DN:** Finally, user can select the OD and DN options for the out let pipes.

Material Library:

The ACO Combipoint files contain materials that are already pre-loaded into the components. When loading the ACO Combipoint files into your project the pre-loaded materials will automatically transfer through.

Schedules and quantities:

The information such as article number, GTIN data, weight, installation guidelines within the parameters is stored as “shared Parameters” so can easily be appeared when creating a schedule and quantities in the project environment.

 <ACO Combipoint>				
A	B	C	D	E
Count	Description	Article number	Weight	Technical information
1	ACO Combipoint top 300x500 cl.C250 PF	89111	35.00 kg	https://www.aco-tiefbau.de/produkte/punktentwaesserung/strassen-und-hofablaeufer/strassenabl
1	ACO Combipoint top 300x500 cl. D400 RF, Kl. D400 RF	89116	43.30 kg	https://www.aco-tiefbau.de/produkte/punktentwaesserung/strassen-und-hofablaeufer/strassenabl
1	ACO Combipoint top 500x500 cl. D400 PF	89117	80.00 kg	https://www.aco-tiefbau.de/produkte/punktentwaesserung/strassen-und-hofablaeufer/strassenabl
2	ACO Combipoint motorway 500x500 D400 w/hinge with insert begu	89528	93.50 kg	https://www.aco-tiefbau.de/produkte/punktentwaesserung/strassen-und-hofablaeufer/strassenabl
1	ACO Combipoint 500x500 standard DSw. GT D400 GJL insert's	1201559	103.70 kg	https://www.aco-tiefbau.de/produkte/punktentwaesserung/strassen-und-hofablaeufer/strassenabl
1	ACO Combipoint PE 300x500 LF 2.Gen h=750mm DN/OD160compatible with CP attachment	0170.39.95	9.00 kg	https://www.aco-tiefbau.de/produkte/punktentwaesserung/strassen-und-hofablaeufer/strassenabl
1	ACO Combipoint PE 500x500 KF 2.Gen h=500mm DN/OD160compatible with CP attachment	0170.39.96	6.00 kg	https://www.aco-tiefbau.de/produkte/punktentwaesserung/strassen-und-hofablaeufer/strassenabl
1	ACO Combipoint PE Wet 500x500 2.Gen h=175cm DN/OD160compatible with CP attachment	0170.40.00	22.00 kg	https://www.aco-tiefbau.de/produkte/punktentwaesserung/strassen-und-hofablaeufer/strassenabl
2	ACO Combipoint PP floor 1a with socket DA160 H=35cm	89010	2.60 kg	https://www.aco-tiefbau.de/produkte/punktentwaesserung/strassen-und-hofablaeufer/strassenabl
1	ACO Combipoint PP floor 2a closed H=35cm	89011	2.60 kg	https://www.aco-tiefbau.de/produkte/punktentwaesserung/strassen-und-hofablaeufer/strassenabl
1	ACO Combipoint PP Body 11 H=35cm	89012	2.60 kg	https://www.aco-tiefbau.de/produkte/punktentwaesserung/strassen-und-hofablaeufer/strassenabl
11	ACO Combipoint PP top / intermediate section 5b / 6a H=35cm	89013	2.60 kg	https://www.aco-tiefbau.de/produkte/punktentwaesserung/strassen-und-hofablaeufer/strassenabl
2	ACO Combipoint PP intermediate section 3 with socket DA160 H=35cm	89014	2.80 kg	https://www.aco-tiefbau.de/produkte/punktentwaesserung/strassen-und-hofablaeufer/strassenabl
1	ACO Combipoint SSA deployment as turbulence reducer	89053	3.50 kg	https://www.aco-tiefbau.de/produkte/punktentwaesserung/strassen-und-hofablaeufer/strassenabl
2	ACO Combipoint double socket DN 160 for connection SSA	89052	1.00 kg	https://www.aco-tiefbau.de/produkte/punktentwaesserung/strassen-und-hofablaeufer/strassenabl